

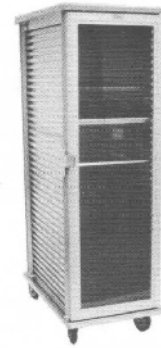


## Merchandiser display cabinets, non-insulated, aluminum

CATALOG PAGE B-13

Type	Model Number	Pan Capacity (18"x26")	Pan Spacing (Inches)	O.A. Dimensions (Inches)			Weight (Pounds)	List Price
				W	D	H		
<b>Extruded Sides</b>	<b>9220-PD-39</b>	39	1½	22	30¾	69¾	140	\$1,901
<b>Corrugated Sides</b>	<b>9105-PD-39</b>	39	1½	22	30¾	69¾	138	2,119
<b>Angle Ledge</b>	<b>9156-PD-20</b>	20	3	22	30¾	69¾	142	2,136

**NOTE:** Other slide spacings are available. Cabinets are also available for different tray sizes and capacities. Please consult factory. For options, see Table BB-1



**9105-PD-39**

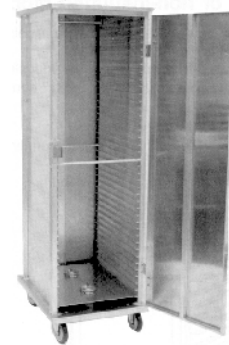
## Canned fuel or cold cabinets, non-insulated, aluminum

CATALOG PAGE B-15

Type	Model Number	Pan Capacity (18"x26")	Pan Spacing (Inches)	O.A. Dimensions (Inches)			Weight (Pounds)	List Price
				W	D	H		
<b>Extruded Side</b>	<b>9220-37-ER</b>	37	1½	22	30¾	69¾	135	\$2,291
	<b>9220-29-ER</b>	29	1½	22	30¾	57¾	126	2,260
	<b>9220-21-ER</b>	21	1½	22	30¾	45¾	120	2,169
<b>Corrugated Sides</b>	<b>9105-37-CR</b>	37	1½	22	30¾	69¾	136	2,495
<b>**Angle Ledge</b>	<b>9156-18-LS</b>	18	3	22	30¾	69¾	138	2,526

\*\*Angle ledge cabinets are also available with 2¼", 4 ½" or 5 1/16" spacing. S/S construction is also available. Consult factory. Canned fuel is not supplied.

**Option** **List Price**  
 Door thermometer.....add \$173  
 For other options, see Table BB-1



**9220-37-ER**

## Hand lift cabinets, insulated & non-insulated

CATALOG PAGE B-16

Type	Model Number	Pan Size	Pan Capacity	O.A. Dimensions (Inches)			Weight (Pounds)	List Price
				W	D	H		
<b>Non-Insulated</b>	<b>9264-1826</b>	Bun Pan 18"x 26"	11	21	27	21	32	\$1,103
	<b>9264-1220</b>	Steam Pan 12"x20"x2 ½"	10	23¾	27	21	34	P.O.R.
<b>Insulated</b>	<b>9264-1826-IN</b>	Bun Pan 18"x26"	11	22½	29	21½	75	P.O.R.
	<b>9264-1220-IN</b>	Steam Pan 12"x20"x2 ½"	10	25¾	29	21½	85	P.O.R.

**Option** **List Price**  
 Dolly for carrying cabinets.....\$326



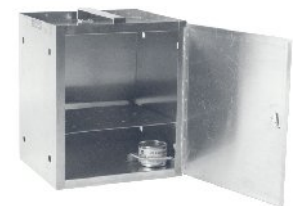
**9264-1826**  
(shown 2 stacked)

## Canned fuel type room service hot food carrier box, aluminum

(fits under most room service tables) CATALOG PAGE H-5

Model Number	O.A. Dimensions W x D x H (Inches)	Weight (Pounds)	*List Price
<b>S-5481</b>	15½ x 13 x 18¼	12	\$617

\*Minimum order is 5 units (for quantities under 5, consult factory).  
 Unit is furnished with one s/s removable shelf. Canned fuel is not supplied.  
**Option:** Extra s/s shelf ..... \$95



**S-5484**