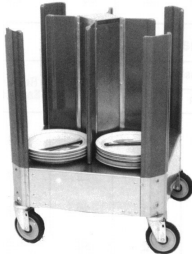




Dish dolly standard & deluxe, aluminum

- 0.125" thick base
- Specially extruded corner posts & divider covered with plastisol.
- 5" all swivel casters.
- Choice of 3 styles.

CATALOG PAGES F-5 & F-6



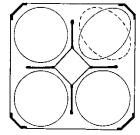
Style "A"
9601-1011-240



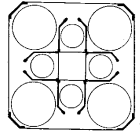
Style "B"
9601-57-480



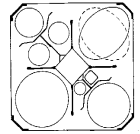
Style "C"
9601-DE-11



STYLE "A"



STYLE "B"



STYLE "C"

Universal Deluxe Models (Furnished with two adjustable adapters)

Universal Deluxe Model	Approx Capacity	Plate/Dish Diameter (Inches)	Style	O.A. Dimensions (Inches)			Weight (Pounds)	Remarks (see note)	List Price
				W	D	H			
9601-DE-11	Varies	4 $\frac{7}{8}$ to 10 $\frac{7}{8}$	C	23	23	32	70	1,4	\$1,395
9601-DE-13	Varies	4 $\frac{7}{8}$ to 12 $\frac{3}{4}$	C	27 $\frac{1}{2}$	27 $\frac{1}{2}$	32	80	1,4	\$1,779

Standard Models (Adjustable adapters are optional)

Model Number	Approx Capacity	Plate/Dish Diameter (Inches)	Style	O.A. Dimensions (Inches)			Weight (Pounds)	Remarks (see note)	List Price
				W	D	H			
9601-68-240	240	6 $\frac{7}{8}$ to 8 $\frac{1}{2}$	A	19	19	32	52	1,4	\$1,118
9601-89-240	240	8 $\frac{7}{8}$ to 9 $\frac{7}{8}$	A	21	21	32	58	1,4	1,126
9601-46-480	480	4 $\frac{7}{8}$ to 6 $\frac{3}{8}$	B	21	21	32	52	1,2	1,359
9601-57-480	480	5 $\frac{1}{2}$ to 7 $\frac{1}{2}$	B	23	23	32	60	1,2	1,370
9601-1011-240	240	10 to 11 $\frac{1}{4}$	A	23	23	32	50	1,4	1,116
9601-1113-200	200	11 $\frac{3}{8}$ to 13 $\frac{1}{8}$	A	27 $\frac{1}{2}$	27 $\frac{1}{2}$	32	76	1,4	1,480
9601-911-480	480	Banquet Rings	A	23	23	44	60	1,3	1,554

NOTES:

- Capacity varies based on weight, thickness, size & nesting of dishes & is shown here for reference only.
- Larger dish size in style "B" will fit in the outer corner sections.
- Banquet ring size used here varies from 9 $\frac{1}{2}$ " to 11 $\frac{1}{4}$ " in diameter.
- For smaller size dishes (4" to 4 $\frac{3}{4}$ "), use adapter kit. The largest dish size will vary.

Options

- | | |
|--------------------------------------|--|
| 1. Wrap around bumper.....\$262 | 4. 5" polyurethane casters (in lieu of 5" std).....\$108 |
| 2. Adjustable adapter (each).....150 | 5. Vinyl dust cover.....P.O.R. |
| 3. Brakes on casters.....55 | 6. Special color plastisol.....P.O.R. |

Heavy duty & extra heavy duty dollies, aluminum

CATALOG PAGE F-2

- Heavy duty solid deck dolly, aluminum
- Furnished with 0.190" thick deck & 5" casters.

Model Number	Edges	Width (Inches)	Length (Inches)	Height (Inches)	Weight (Pounds)	List Price
9086-SB	All Down	22	30 $\frac{3}{8}$	6 $\frac{3}{8}$	20	\$286
9086-U-SB	All Up	22	30 $\frac{3}{8}$	7 $\frac{3}{8}$	20	297



9086-SB

Options

Stacking pins for handlift cabinets.....\$101

- Extra heavy duty solid deck dolly, aluminum.
- Furnished with reinforced deck & 6 casters (6"x 2") 4 swivel, 2 rigid.

Model Number	Edges	Width (Inches)	Length (Inches)	Height (Inches)	Weight (Pounds)	List Price
9086-SB-EHD-2248	All Down	22	48	9 $\frac{1}{2}$	74	P.O.R.



9086-SB-EHD-2248

(with optional eyelit & s/s hook)

Options: Eye lit & s/s rod with hook, add \$116.



Heavy duty aluminum dish dollies for square and rectangular plates, dishes & platters

- 0.125" thick base
- Specially extruded corner posts & divider covered with plastisol.
- 5" all swivel casters (2 with brakes)
- Choice of many styles.

CATALOG PAGE F-6A



4 Section Dolly
9602-1212-200



4 Section Dolly



8 Section Dolly



8 Section Dolly
9602-0505-480

Heavy Duty Models (For Square Dishes/Plates)

Model Number	Approx Capacity	Plate/Dish Size (Inches)	No. Of Sections	O.A. Dimensions (Inches)			Weight (Pounds)	List Price (See Note)
				W	D	H		
9602-0808-240	240	8" Square	4	20 $\frac{1}{4}$	20 $\frac{1}{4}$	32	78	\$1,174
9602-0909-240	240	9 $\frac{1}{4}$ " Square	4	23	23	32	84	1,218
9602-1010-240	240	10" Square	4	24 $\frac{1}{4}$	24 $\frac{1}{4}$	32	86	1,298
9602-1111-240	240	11 $\frac{1}{4}$ " Square	4	26 $\frac{3}{4}$	26 $\frac{3}{4}$	32	94	1,366
9602-1212-200	200	12" Square	4	28 $\frac{1}{4}$	28 $\frac{1}{4}$	32	97	1,580
9602-1313-200	200	13 $\frac{3}{4}$ " Square	4	31 $\frac{3}{4}$	31 $\frac{3}{4}$	32	108	1,698
9602-0505-480	480	5 $\frac{1}{4}$ " square	8	23	23	32	104	1,760
9602-0606-480	480	6" Square	8	25 $\frac{1}{4}$	25 $\frac{1}{4}$	32	110	1,664
9602-0707-480	480	7" Square	8	28 $\frac{1}{4}$	28 $\frac{1}{4}$	32	116	1,698

Heavy Duty Models (For Rectangular Dishes/Platters)

Model Number	Approx Capacity	Platter/Dish Size (Inches)	No. of Sections	O.A. Dimensions (Inches)			Weight (Pounds)	List Price (See Note)
				W	D	H		
9602-2512-120	120	25x12 $\frac{7}{8}$	2	27 $\frac{7}{8}$	27 $\frac{7}{8}$	32	95	\$1,390
9602-2210-120	120	22x10 $\frac{1}{4}$	2	24 $\frac{3}{4}$	26 $\frac{1}{4}$	32	90	1,360
9602-2010-120	120	20x10 $\frac{1}{2}$	2	22 $\frac{3}{4}$	26 $\frac{1}{4}$	32	88	1,320
9602-1810-120	120	18x10	2	20 $\frac{3}{4}$	24 $\frac{1}{4}$	32	82	1,290
9602-1609-120	120	16 $\frac{1}{4}$ x9	2	19	22 $\frac{1}{4}$	32	80	1,240
9602-1408-180	360	14 $\frac{1}{2}$ x8 $\frac{1}{4}$	6	33 $\frac{1}{4}$	32	32	114	1,668
9602-1108-180	360	11 $\frac{3}{4}$ x8 $\frac{1}{4}$	6	37 $\frac{3}{4}$	32	32	119	1,698
9602-1307-180	360	13x7 $\frac{1}{4}$	6	30 $\frac{1}{4}$	29	32	106	1,650
9602-1106-180	360	11x6 $\frac{1}{4}$	6	26	26	32	102	1,580
9602-1005-180	360	10x5 $\frac{1}{2}$	6	22 $\frac{1}{4}$	23 $\frac{3}{4}$	32	98	1,550
9602-0804-180	360	8 $\frac{1}{2}$ x4 $\frac{1}{2}$	6	21 $\frac{1}{4}$	20 $\frac{3}{4}$	32	92	1,480

NOTE: Minimum order quantity is 4 units/size. Due to many variations in square and rectangular dishes/platters, these dollies are made to order and 2 sample dishes/platters are required for each size ordered. Total capacity and size may vary depending upon the dish/platter configuration. Dollies for oval shape platters and for sizes not listed above are also available. Consult factory.

Options

List Price

1. Wrap around bumper.....\$249
2. 5" polyurethane casters (in lieu of 5" std).....102
3. Brakes on 2 additional casters.....52
4. Special color plastisol.....P.O.R.



Deluxe dish dolly, heavy duty aluminum, extra large and highly adjustable for round, square, rectangular and oval plates, dishes, bowls & platters

- 0.125" thick base
- 0.250" thick base plate
- Specially extruded corner posts and twelve (12) adjustable 1" hex rods, all covered with plastisol
- 5" all swivel casters (2 with brakes)
- 1/4"x 1" X-bars reinforcement at bottom.
- Mix & match various sizes
- Rods can be easily adjusted with 3/8 -16 carriage bolts

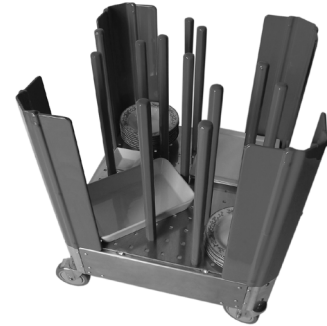
CATALOG PAGE F-6B

Model Number	Capacity	Width (Inches)	Length (Inches)	Height (Inches)	Weight (Pounds)	List Price
9601-DE-AS-2727	Varies	27 3/16	27 3/16	32	85	\$1,498

Options

List Price

- | | |
|---|--------|
| 1. Wrap around bumper..... | \$249 |
| 2. 5" polyurethane casters (in lieu of 5" std)..... | 102 |
| 3. Brakes on 2 additional casters..... | 52 |
| 4. Special color plastisol..... | P.O.R. |
| 5. Extra hex rod..... | 64 |
| 6. Removeable push handle..... | 196 |
| 7. Fixed push handle..... | 248 |



9601-DE-AS-2727

(shown with one of many possible arrangements)